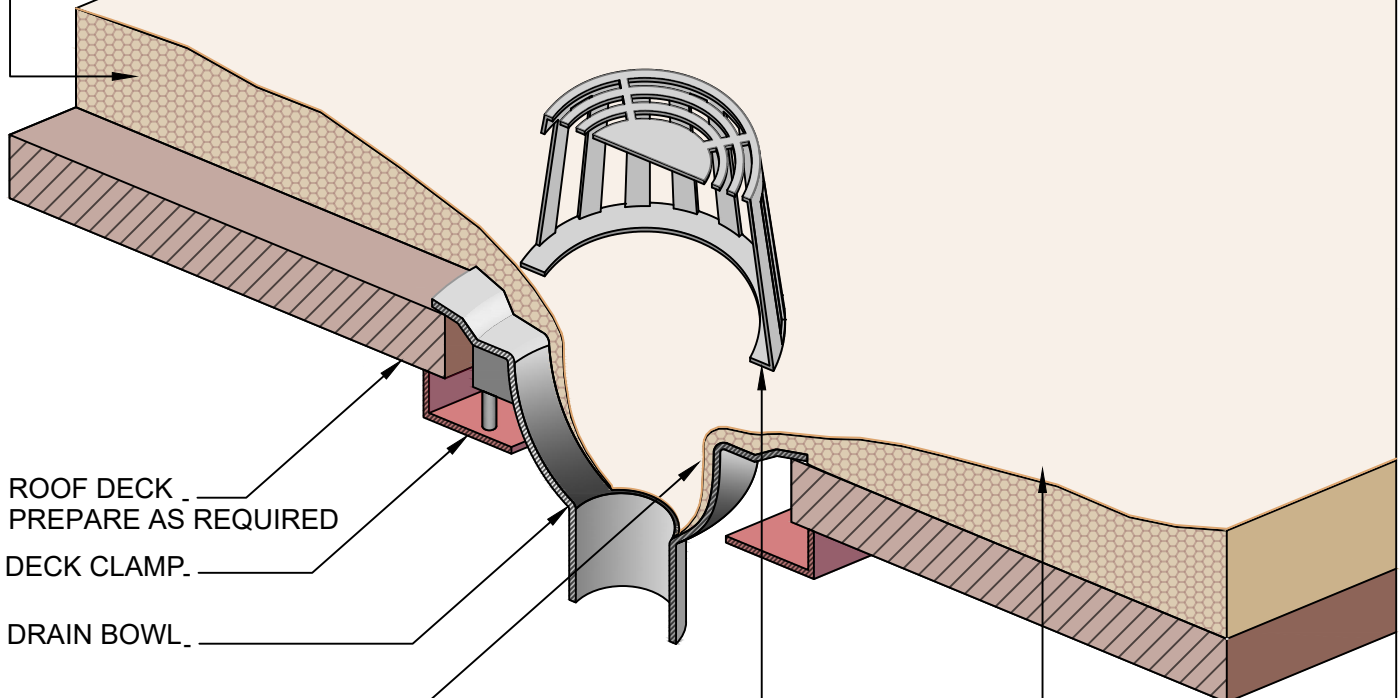


FOAM (1"[25 mm]
MIN.THICKNESS



ROOF DECK _
PREPARE AS REQUIRED

DECK CLAMP _

DRAIN BOWL _

APPLY SPF INTO _
DRAIN BOWL - PREPARE AS
REQUIRED TO ENHANCE
ADHESION

AFFIX DRAIN STRAINER _
TO ELASTOMERIC COATING
WITH DABS OF COMPATIBLE
SEALANT

ELASTOMERIC COATING _

NOTES

- 1. TAPER SPF TOWARD DRAIN BOWL TO PROVIDE POSITIVE DRAINAGE.
- 2. THE USE OF A METAL DECK SUMP PAN IS NOT RECOMMENDED. HOWEVER, DRAIN RECEIVER/BEARING PLATES ARE APPLICABLE WITH SOME PROJECTS.
- 3. WHERE THE SURFACE SKIN IS TRIMMED OR GROUND FLUSH, ADDITIONAL BASE COATING THICKNESS IS REQUIRED.

ALTERNATE ROOF DRAIN